



October 2023



Goddard Times

GODDARD HOUSE

UPCOMING EVENTS

GODDARD HOUSE SUPPORT GROUPS

Transitions Group

For Goddard House family members who are coping with the death of a loved one.

Meets monthly on the 3rd Thursday.

Caregiver Education and Support Group

This group welcomes Goddard House family members. *Meets monthly on the 4th Wednesday.*

The above groups meet with Barbara Moscovitz, MSW virtually via Zoom from 7:00–8:30 P.M.

Please contact Director of Social Services Becca

Mayfield at 617-731-8500, or

rmayfield@goddardhouse.org for more info.



Olmsted Family Caregiver Group

This group welcomes Goddard House family members. *Meets monthly on the first Tuesday from 6:30–7:30 P.M. on Zoom. Please*

contact Olmsted Program Director Kristen Cipriano at kcipriano@goddardhouse.org for more info.

RESIDENT PROFILE



Wendy Reich was born and raised in Montreal, Canada until her studies brought her to the United States. While working to complete her PhD in psychiatry, Wendy met her husband, Theodore, who was widely revered in the field of psychiatry. They spent their days alongside one another, not only as life partners, but also as colleagues, traveling to different countries around the world and studying mental health conditions across cultures. A large portion of their work took them to India, where they focused their studies around families and the genetic aspects of mental illness. It was also in India that they married! Upon returning to the states after living in India for a full year, Wendy and Theodore continued to visit annually for weeks at a time to pursue their research. When asked, “Was it hard to work so closely with your husband?” Wendy responded with a beaming smile, “Not at all. It was great.” On top of being an accomplished researcher, Wendy has also worked as a professor at various universities including the University of Missouri, the University of Washington in St. Louis, and Harvard University. Despite all of the incredible contributions to her field of study, when asked about what she is most proud of, Wendy answered, “My children are very kind people. They’re very good to me too.” Wendy, we are so grateful to your warm smile and gentle, kind spirit here at Goddard!

-Programming Assistant Cherise Detwiler

The Annual Alzheimer's Mini-Walk at Goddard House

by *EnrichedLIFE* Director **Rebecca Margolin**

On a sunny morning in late September, residents, associates, and family members came together to raise awareness and funds for the Alzheimer's Association. Participants walked or rolled several laps around the Gazebo, or found a seat out front to cheer everyone on. The feeling of the event was positive and uplifting, with upbeat music in the background, refreshments, and purple accessories. Each year, associates from all departments come together to hold this meaningful event that leaves an impact.



Residents and Associates at the start line!

Assistant Executive Director **Lance Chapman**, the event founder, said, "The original idea for the mini-walk at Goddard House was for it to be a more inclusive community-wide event; the size of our group that could attend the main Boston walk was getting small. The Goddard House Mini-Walk has been a tradition here since 2017. Holding it here around the Gazebo allows many more residents, associates, and families to come together in the fight to find a cure for Alzheimer's Disease. It's always a special day infused with hope and a spirit of encouragement, and the 2023 Mini Walk was no exception."

This year's walk raised over \$700, and Goddard House will be collecting donations for the Alzheimer's Association throughout the fall. To make a donation through Goddard House, checks made out to the Alzheimer's Association may be mailed to Lance Chapman, 165 Chestnut Street, Brookline MA 02445. Goddard associates may consider donating \$1 to participate in Casual Fridays through the end of October. 🏔️



*Above, top row, left to right: **Drew R.**; CEO **Candace Cramer**, **Sylvia M.** and Assistant Executive Director **Lance Chapman**. Second row: Goddard House Programming team with Executive Director **News-Johanne Marcellus**; Bottom row: Olmsted Program Director **Kristen Cipriano**, **Marta G.**, and **Lance**; Dining Associates **Maria Depeiza** and **Eliese Selman***

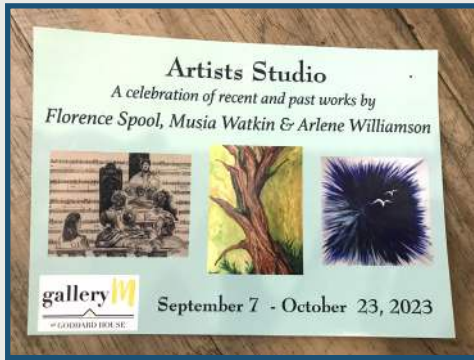


Above, top row, left to right: Community Art Therapist **Meredith Griffiths** and **Mimi H.**; **Florence S.** and **Vivian F.** with Resident Care Associate **Ruth Porter** in the background; Programming Assistants **Sabella Masticola** and **Lisa Korzeniowsk** playing cornhole with **Ivy L.** Second row: **Florence S.** and Programming Assistant **Marie Jeanty**; **Marie** at the donations table including purple bracelets handmade by Goddard residents; **Marta G.** and Olmsted Program Director **Kristen Cipriano**; Lead Housekeeping Associate **Shereen Montrose** and **Sylvia M.** Third row: Programming Assistant **Noam Oren-Grinberg**; **Sabella** and **Grace M.**; **Mimi L.** and Housekeeping Associate **Betty Depina**; **Ivy L.** and **Jaci S.** Bottom: **Susan F.**





Gallery M!



Florence Spool, Musia Watkin, and Arlene Williamson are all artists living at Goddard House. While each has her own individual story and background in the arts, they enjoy creating in each other's company. The artists can often be found working in

the Country Kitchen on Saturday mornings.

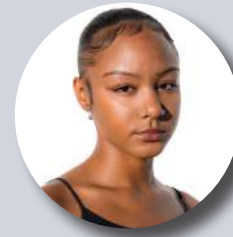
This exhibit, which runs through October 23, showcases the varied styles and approaches of each artist. The pieces that are featured include recent works created here at Goddard House, as well as past works from various times throughout the artists' lives.

Florence describes herself as being artistically inclined from a young age, and has created works of art throughout most of her life. Pastels and watercolors are her preferred mediums and she often finds inspiration from nature.

Musia began as a sculptor, but now primarily creates abstract paintings. She states, "Involving myself in a painting is the way I can express my love of forms, shapes and colors, and at the same time feel fulfilled by having expressed myself. Losing myself in a painting that has just really emerged can be very satisfying."

Arlene's career as an acrylic artist began when she moved to Goddard House in 2015 and joined the Open Studio art group. "All in the Family" is how Arlene describes the works she has shared in this exhibition. A fitting phrase, as a couple of the pieces are works by her children. Reflecting on her paintings, Arlene shares, "It is fun being an artist; you never know what's going to happen when you put your brush to the canvas!"

ASSOCIATE PROFILE



Dining Room Supervisor **Jada Montgomery** joined the Goddard House team a few months ago and is looking

forward to getting to know everyone better. Before starting at Goddard House, Jada worked as an office administrator. She was looking for a change of environment and for a position with more purpose which is why she decided to try out senior living. So far she has loved getting to know the residents and learning the unique things about them. Jada has made an effort to spend time with the residents outside of the dining room as well, and has enjoyed attending programs like Jewelry Making. She mentioned that by spending time with the residents in different settings, she is able to better get to know them on a personal level.

Outside of work, Jada knows how to stay busy. She enjoys drawing and making music as a way to express her creative side and even has experience modeling! She also spends time with her dog and cat, and loves exploring different beaches.

Thank you Jada for always looking out for the residents. We are so happy you are here!

*-Olmsted Program Director
Kristen Cipriano*

Volume 11 No. 10—October 2023

NEWSLETTER CONTRIBUTORS

Cherise Detwiler

Programming Assistant

Kristen Cipriano

Olmsted Program Director

Rebecca Margolin

EnrichedLIFE Director



ASSISTED LIVING & MEMORY SUPPORT

165 Chestnut Street
Brookline,
Massachusetts 02445
617-731-8500

WWW.GODDARDHOUSE.ORG